

Germany

EPR Fact Sheet

Decision making

Off-site emergency preparedness and response is mostly a local responsibility. Upon request, the Federation will support and coordinate the Länder activities in disaster response.

The Federal Ministry for the Environment (BMU) is responsible for the national radiological situation report and is authorised to specify limits and measures for the public.

The implementation of disaster control measures falls under the responsibility of the authorities of the Länder and, depending on the respective *Land*, is delegated to the regional or even to the local level.

Advice

The Federal Office for Radiation Protection ([BfS](#)) operates decision support systems and the Integrated Measurement and Information System for the Monitoring of Environmental Radiation ([IMIS](#)).

The advisory committees RSK (Reactor Safety Commission) and SSK (Commission on Radiological Protection) as well as the [GRS](#) as technical support organisation provide support for the BMU.

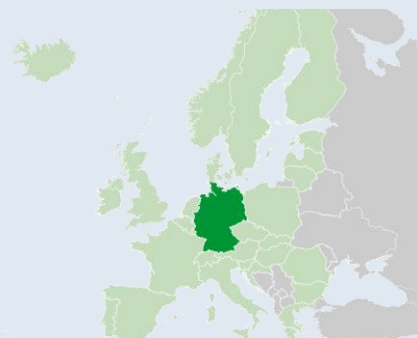
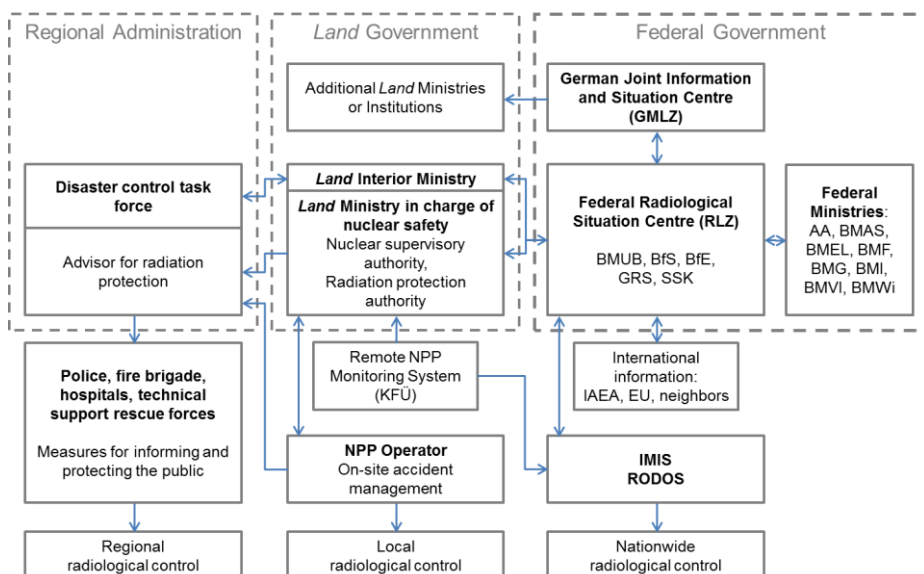
Licensee

The licensee is obliged to make necessary information available to the authorities, to support the authorities in assessing the situation and to advise them in taking decisions on protective actions for the public.

Alarming

The licensee is obliged to inform the civil protection authority with no delay of any event beyond design limits. The civil protection authority will inform the public.

Organizational structure



Country info

Capital	Berlin
Official language	German
Population	80 M
Area	360 000 km ²
Currency	Euro (€)
Time zone	UTC+1
Calling code	+49
Internet TLD	.de
NPPs /ele. share	9/17%

NWP*

German Joint Information and Situation Center, Federal Office of Civil Protection and Disaster Assistance (GMLZ)

NCA*

Federal Ministry for the Environment, Nature Conservation and Nuclear Safety (BMU)

Emergency website

None

Online measurements

<http://odlinfo.bfs.de/>

Bilateral agreements**

Austria, Belarus, Belgium, Brazil, Bulgaria, China, Czech Republic, Denmark, France, Georgia, Hungary, Japan, Kyrgyzstan, Luxembourg, Moldova, Netherlands, Norway, Russia, Slovakia, Spain, Sweden, Switzerland, Ukraine, United Kingdom, Uzbekistan

RANET capabilities

- Source Search and Recovery
- Radiation Survey
- Environmental Sampling and Analysis
- Radiological Assessment and Advice
- Medical Support
- Dose Assessment
- Decontamination

*National Warning Point and Competent Authority under the Emergency Conventions

** Nuclear EPR only

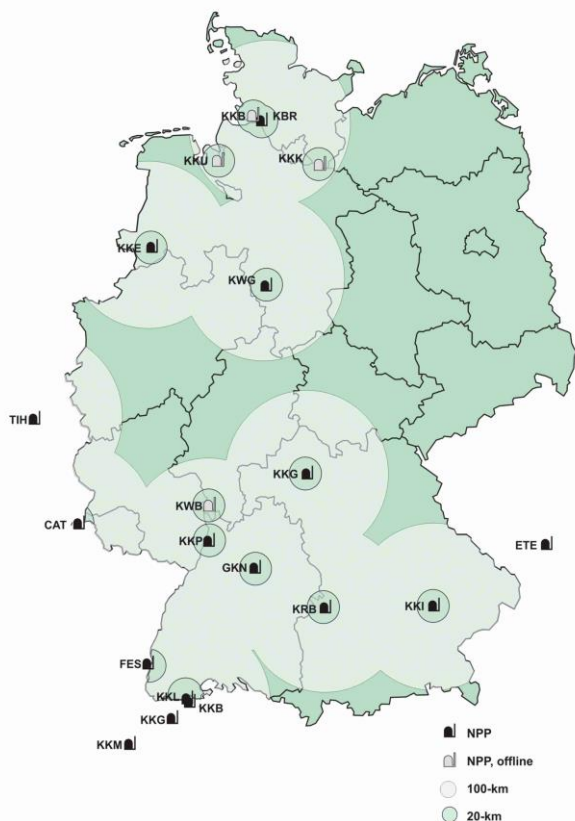
Nuclear facilities* and population

NPP	Type	MW _e	GPS coordinates		5 km pop.	20 km pop.	100 km pop.
Brunsbüttel	KKB BWR	806	53.891667° N	9.201667° E	7 000	120 000	5.8 M
Brokdorf	KBR PWR	1480	53.850833° N	9.344722° E	11 000	170 000	6.1 M
Krümmel	KKK BWR	1402	53.410000° N	10.408889° E	13 000	390 000	5.5 M
Unterweser	KKU BWR	1410	53.427778° N	8.480278° E	9 000	120 000	4.4 M
Emsland	KKE PWR	1400	52.474167° N	7.317778° E	9 000	150 000	5.4 M
Grohnde	KWG PWR	1430	52.035278° N	9.413333° E	16 000	250 000	7.3 M
Grafenrheinfeld	KKG PWR	1345	49.984167° N	10.184722° E	29 000	220 000	5.7 M
Biblis	KWB-A PWR	1225	49.710000° N	8.415278° E	32 000	570 000	10.5 M
	KWB-B PWR	1300					
Philippsburg	KKP-1 BWR	926	49.252778° N	8.436389° E	25 000	480 000	11.3 M
	KKP-2 PWR	1468					
Neckarwestheim	GKN-1 PWR	840	49.041111° N	9.175000° E	42 000	860 000	10 M
	GKN-2 PWR	1400					
Gundremmingen			48.514722° N	10.402222° E	10 000	200 000	7.5 M
	KRB-B BWR	1344					
	KRB-C BWR	1344					
Isar	KKI-2 BWR	1,485	48.605556° N	12.293056° E	16 000	210 000	5.6 M

Research Rector		W _{th}	GPS coordinates		Actions	Type
Berlin	BER II	10 M	52.409722° N	13.128333° E	≤ 20km	Swimming pool/ MTR
Garching	FRM-II	20 M	48.265833° N	11.6758333° E	≤ 2km	Swimming pool/ Compact Core
Mainz	FRMZ	100 k	49.992500° N	08.237222° E	≤ 250m	TRIGA Mark II

*The IAEA emergency preparedness category 1 and other relevant facilities

Planning zones



BMUB - RS II 5
August 2016

Protection Strategy

Action	Level	Radius
Reflex Evacuation	General Emergency	5 km
Evacuation	100 mSv (eff., 7d, ext.+inh.)	20 km
Sheltering	10 mSv (eff., 7d, ext.+inh.)	100 km
ITB < 45 a	250 mSv (thy., 7d, inh.)	100 km
ITB < 18 a or pregnant	50 mSv (thy., 7d, inh.)	Germany
Food/Feed Ban	General Emergency or OIL	Germany

Comments

- In addition reference level of 100 mSv (eff. dose all pathways, 1 year) is set for emergency exposure situations.
- Any of the above measures goes along with traffic and access restrictions.
- The protection strategy is described [here](#), planning zones are discussed [here](#).
- The planning zone up to 20 km is divided in 12 sectors of 30 degrees with sector 1 to the north (except for Biblis with 12 to the north).
- ITB is pre-distributed in some *Länder*