

Poland

EPR Fact Sheet

Decision making

Depending on the extent of emergency responsibility for mitigating its consequences belongs to the licensee, relevant provincial governor or the Minister of Interior.

Advice

In case of radiological or nuclear emergency the National Atomic Energy Agency (PAA) provides expert assistance to other authorities. PAA operates the national radiation monitoring network and decision support systems. PAA also coordinates radiation measurements in case of emergency.

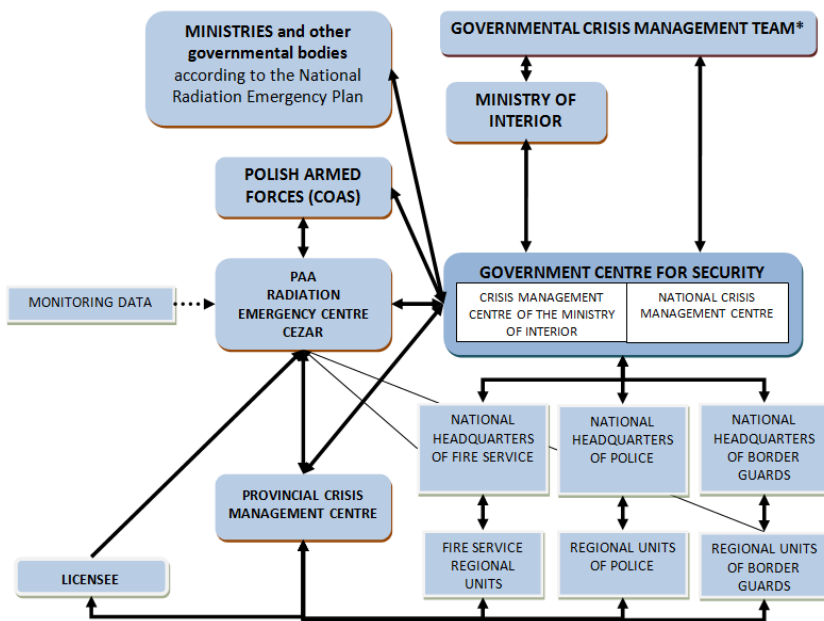
Licensee

Secures the emergency site and provides first aid for victims of the emergency. Notifies the PAA and relevant emergency services of the emergency. Notifies the provincial governor if the emergency extends beyond the site boundaries.

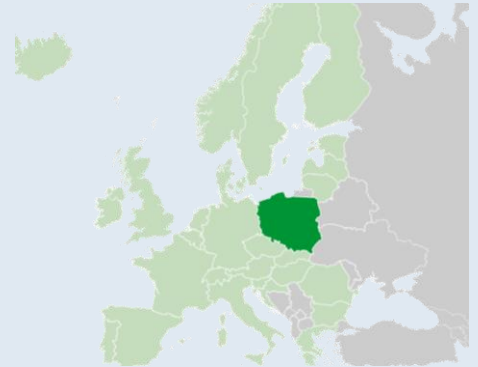
Alarming

In case of radiation or nuclear emergency the licensee is obliged to notify PAA and other relevant authorities according to the radiation emergency plan. Provincial governor or/and the Minister of Interior informs the public.

Organizational structure



* The PAA President is a member of the Governmental Crisis Management Team in case of crisis situation due to radiation emergency on national scale



Country info

Capital	Warsaw
Official language	Polish
Population	38.5 M
Area	313 000 km ²
Currency	Zloty (PLN)
Time zone	UTC+1
Calling code	+48
Internet TLD	.pl
NPPs /ele. share	0/0%

NWP and NCA*

Radiation Emergency Centre CEZAR,
National Atomic Energy Agency

Emergency website

www.paa.gov.pl

Online measurements

<http://paa.gov.pl/ocena-sytuacji-radiacyjnej-kraju/rozklad-mocy-dawki-promieniowania-gamma>

Bilateral agreements

Austria, Belarus, Czech Republic, Denmark, Lithuania, Germany, Norway, Russia, Slovakia, Ukraine

RANET capabilities

None

*National Warning Point and Competent Authority under the Emergency Conventions

Nuclear facilities* and population

Research Reactor		MW _{th}	GPS coordinates		Actions	Type
Otwock-Świerk	MARIA	30	52.122981° N	21.344094° E	≤ 1 km	pool reactor

*The IAEA emergency preparedness category 1 and other relevant facilities

Emergency classification

On-site emergency – radiation emergency occurring on the site of organizational entity, with the impact limited to the area within the site boundaries of this organizational entity

Provincial scale public emergency – radiation emergency occurring on the site of organizational entity, or beyond this site during field works or during the transport of nuclear materials, ionizing radiation sources, radioactive waste or spent nuclear fuel, with the impact limited to the territory of a single province

National scale public emergency – radiation emergency similar to provincial scale public emergency, if its impact extends, or may extend, over the territory larger than that of a single province or extends beyond the state territory

Protection strategy

Protective Action	OILs /EALs	Comments
Evacuation	100 mSv (eff., 7d, ext.+inh.)	
Sheltering	10 mSv (eff., 2d, ext.+inh.)	
Temporary relocation	30 mSv (eff., 30d, ext.+inh.)	
Permanent resettlement	1 Sv (eff., lifetime)	
ITB	50 mGy (thyroid absorbed dose)	
Withdrawal and substitution of foodstuffs and drinking water	Radionuclide specific OILs	